



**Pre-requisites for Upgrading** ..... 1

**Enhancements to Options**..... 1

    Commercial Contracts ..... 1

    Property Types..... 1

        Copy Sales Quote ..... 1

        Search Elevations ..... 2

    Link to QuickBooks ..... 2

**New Options** ..... 3

    Remakes ..... 3

### Pre-requisites for Upgrading

Please refer to the [Release Notes](#), which document important behaviour changes, which are introduced in this version. These must be read in order to understand how they might affect your installation & upgrade process.

If you are upgrading from a version prior to Windowmaker 2012, please also refer to the consolidated [What's New](#) and [Release Notes](#) documents on our website ([www.windowmaker.com/EN/WhatsNew.aspx](http://www.windowmaker.com/EN/WhatsNew.aspx)).

Use the links below to access documents.

R5 Release Notes:

[www.windowmaker.com/EN/PDF/Windowmaker%202012%20R5%20Release%20Notes.pdf](http://www.windowmaker.com/EN/PDF/Windowmaker%202012%20R5%20Release%20Notes.pdf)

Documents since your current version:

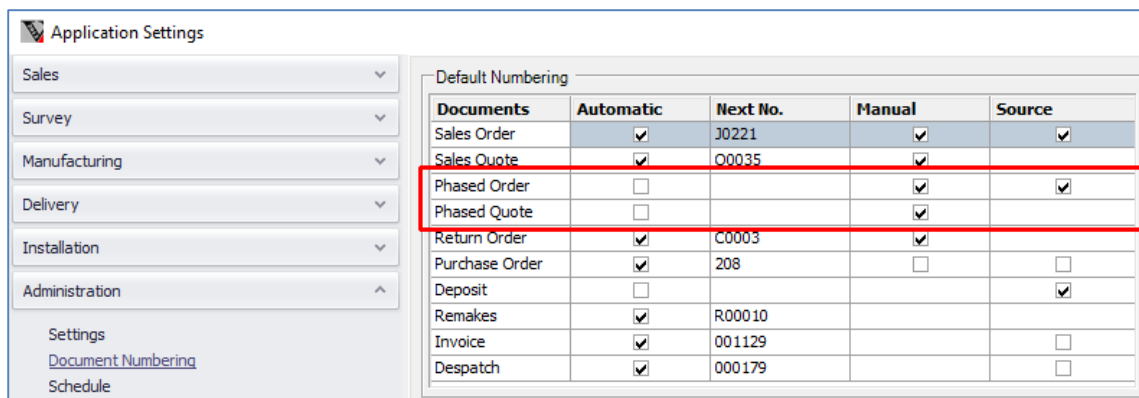
What's New : [www.windowmaker.com/EN/PDF/Windowmaker%202012%20\(v6.x\)%20What's%20New.pdf](http://www.windowmaker.com/EN/PDF/Windowmaker%202012%20(v6.x)%20What's%20New.pdf)

Release Notes : [www.windowmaker.com/EN/PDF/Windowmaker%202012%20\(v6.x\)%20Release%20Notes.pdf](http://www.windowmaker.com/EN/PDF/Windowmaker%202012%20(v6.x)%20Release%20Notes.pdf)

### Enhancements to Options

#### Commercial Contracts

You can now specify separate numbering sequences for Phased Quotes and Orders. Sub-orders of the Phased Order will always be numbered as Phased Order No. + <Phase No.>, where Phase No. is adjusted so that the Sub-order No. is always 8 characters e.g. PO010001 for Sub-order 1 of Phased Order PO01.



#### Property Types

##### Copy Sales Quote

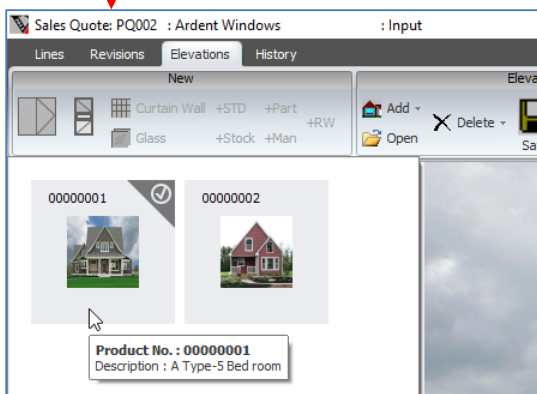
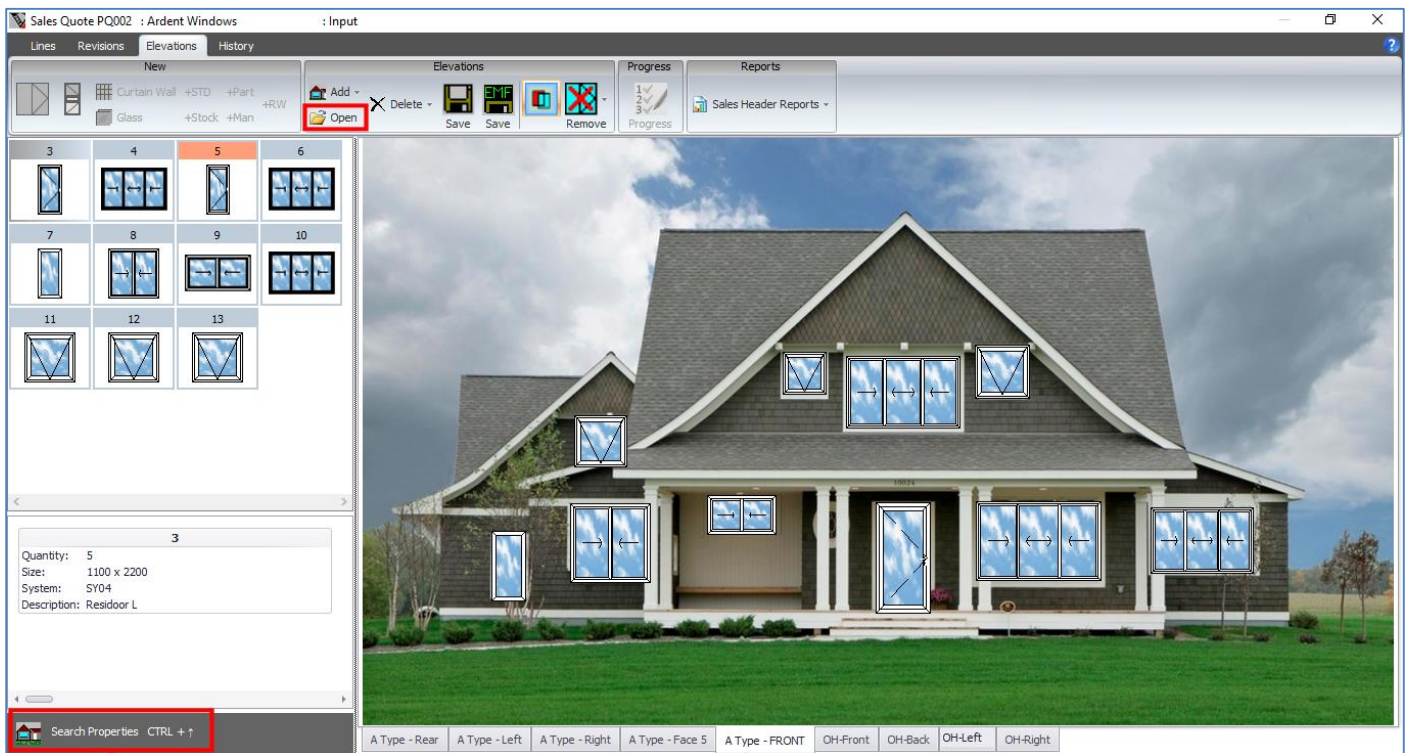
The program now allows to copy a Sales Quote containing Property Sales Lines from one customer to another. Elevations in the source Sales Quote are also copied. To achieve this, program automatically copies the relevant Property products from the source customer to the other customer.

### Search Elevations

It is now possible to Search (Ctrl + ↑) Elevations associated with selected Properties in a Sales Quote. This is particularly useful when the Sales Quote contains multiple Properties with many Faces for each. By default, Elevation view lists Faces of the first Property and those directly associated with the Sales Quote.

The program now also allows to:

- ▲ Search Elevations using Product No. or Short Description or both
- ▲ Rename Faces easily by double-clicking
- ▲ Edit Elevation image using 'Open' button e.g. to add any additional information text
- ▲ Add Property Sales Lines from the Elevations tab
- ▲ Add '+Part' and '+Stock' Sales Lines from the Elevations tab - associated image is displayed on the Elevation
- ▲ Specify Location for '+Part' and '+Stock' Sales Lines



### Link to QuickBooks

Windowmaker can now synchronise Stock Issue Transactions with QuickBooks (desktop version). These are posted in QuickBooks as Inventory Adjustment transactions.

### New Options

### Remakes

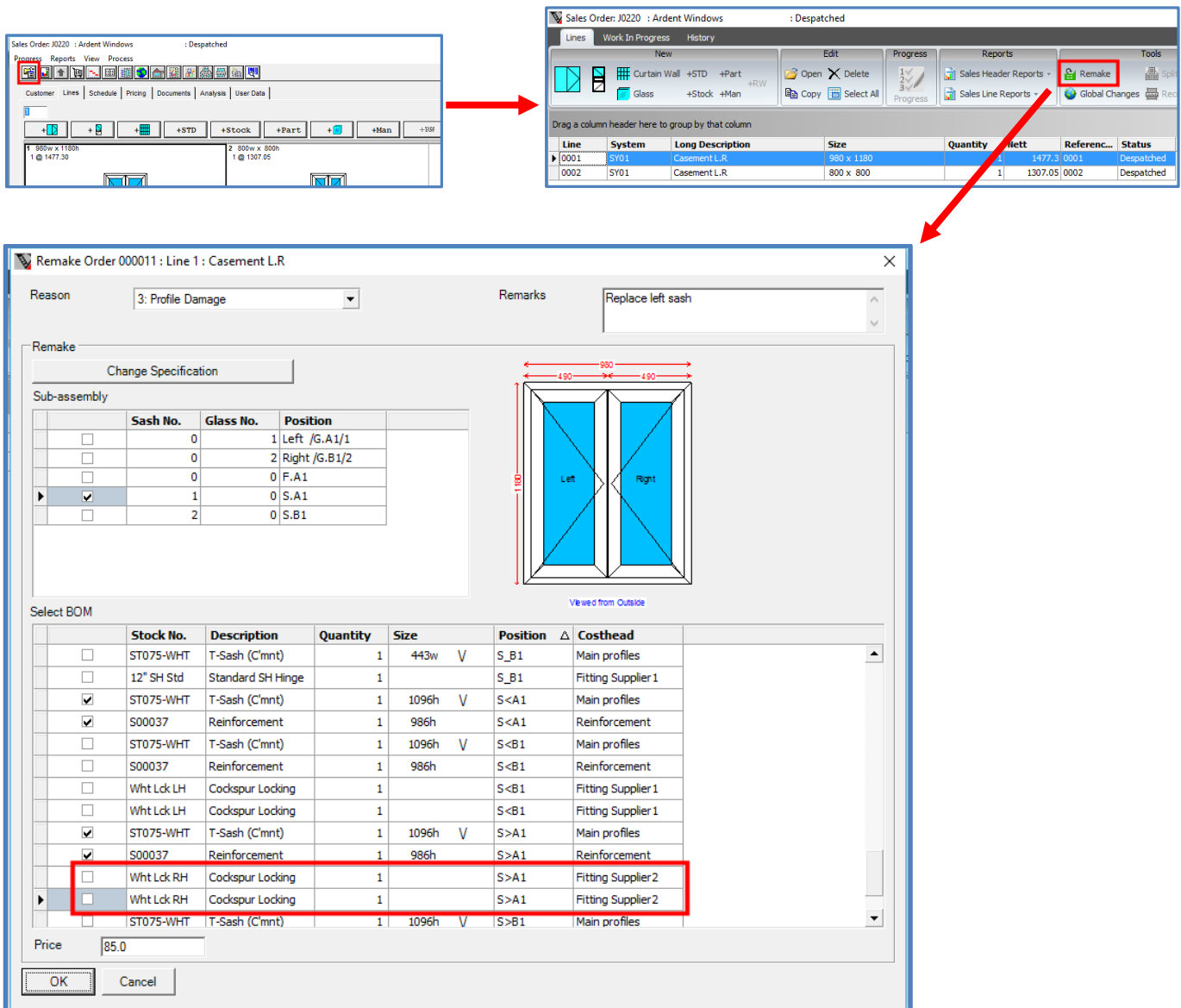
The program is now enhanced to handle remakes and replacement orders easily and more efficiently. Remakes may be required for various reasons such as damages, manufacturing mistakes, incorrect specifications or survey etc. Replacement orders are required to fix issues with already installed windows. It might be for the full window/door or a part of it.

When creating a remake for a Sales Line corresponding to a window/door:

- ▲ Specify a reason for remake, these must already be set-up
- ▲ Change specification if necessary e.g. correct sizes
- ▲ Select sub-assemblies to remake, this automatically selects corresponding BOM lines
- ▲ Deselect BOM for components that can be reused e.g. handles.
- ▲ The Price is calculated automatically if using Cost+Mark-up pricing approach, or key in a price

This will create a new Remake Order consisting of the sub-assembly to be remade as a Sales Line. Separate document numbering and user rights for Remakes are available.

You can analyse the reasons and cost of remakes to take the necessary corrective and preventive measures.



The screenshot illustrates the workflow for creating a remake order. It starts with the main menu, moves to a sales order table, and then to a detailed remake order window. The remake order window includes a reason dropdown, remarks, a sub-assembly table, a BOM table, and a window diagram.

**Sales Order Table:**

Line	System	Long Description	Size	Quantity	Nett	Referenc...	Status
0001	SY01	Casement L.R.	980 x 1180	1	1477.3	0001	Despatched
0002	SY01	Casement L.R.	800 x 800	1	1307.05	0002	Despatched

**Remake Order 000011 : Line 1 : Casement L.R.**

Reason: 3: Profile Damage  
Remarks: Replace left sash

**Sub-assembly Table:**

Sub-assembly	Sash No.	Glass No.	Position
<input type="checkbox"/>	0	1	Left /G.A1/1
<input type="checkbox"/>	0	2	Right /G.B1/2
<input type="checkbox"/>	0	0	F.A1
<input checked="" type="checkbox"/>	1	0	S.A1
<input type="checkbox"/>	2	0	S.B1

**Select BOM Table:**

Stock No.	Description	Quantity	Size	Position	Costhead
<input type="checkbox"/>	ST075-WHT T-Sash (Cmnt)	1	443w	V S_B1	Main profiles
<input type="checkbox"/>	12" SH Std Standard SH Hinge	1		S_B1	Fitting Supplier 1
<input checked="" type="checkbox"/>	ST075-WHT T-Sash (Cmnt)	1	1096h	V S<A1	Main profiles
<input checked="" type="checkbox"/>	S00037 Reinforcement	1	986h	S<A1	Reinforcement
<input type="checkbox"/>	ST075-WHT T-Sash (Cmnt)	1	1096h	V S<B1	Main profiles
<input type="checkbox"/>	S00037 Reinforcement	1	986h	S<B1	Reinforcement
<input type="checkbox"/>	Whit Lck LH Cockscur Locking	1		S<B1	Fitting Supplier 1
<input type="checkbox"/>	Whit Lck LH Cockscur Locking	1		S<B1	Fitting Supplier 1
<input checked="" type="checkbox"/>	ST075-WHT T-Sash (Cmnt)	1	1096h	V S>A1	Main profiles
<input checked="" type="checkbox"/>	S00037 Reinforcement	1	986h	S>A1	Reinforcement
<input type="checkbox"/>	Whit Lck RH Cockscur Locking	1		S>A1	Fitting Supplier 2
<input checked="" type="checkbox"/>	Whit Lck RH Cockscur Locking	1		S>A1	Fitting Supplier 2
<input type="checkbox"/>	ST075-WHT T-Sash (Cmnt)	1	1096h	V S>B1	Main profiles

Price: 85.0

Diagram: Views from Outside. Dimensions: 980 (width), 1180 (height), 490 (sash width), 96 (sash gap).